

MASTERCLASS[®]

KITCHENS

Handles Range Specific Products

Section 14 - Handles - Range Specific Products	Page(s)
Premier Handles explained	14.1
Modern Handle Collection	14.2 - 14.7
Classic Handle Collection	14.8 - 14.11

14.1 - Handles explained

Handles are not included in the price when ordering units

Modern Handle Range



Edge Straight Rose Gold

Classic Handles Range



Knob Die-cast Pewter Effect

Within Masterclass, we want to continue to offer the customer luxury handles when planning & designing their chosen range of furniture. To this end we offer our handle collection in this section of the Masterclass product guide. However, with this freedom comes the need to ensure that the chosen handle will fit. Some drawer fronts are five piece construction and these should be noted when choosing the handle. Particular care should be taken with 300mm wide drawers as in some ranges these will not allow the use of long drop handles within the centre panel area of the drawer front.

If choosing any handle from the Masterclass collection, you will need to stipulate the handle code and quantity of handles you require. You can choose any number of different handles within a single order. All handles have **PH CODES** and are supplied to order. All handles are priced individually.

Handles can be ordered at the time of ordering your complete kitchen, or separately if required.

14.2 - Modern Handle Collection

NOTE: Dimensions marked **XX/XXmm** indicate **overall length / hole centres**.

Extra handles must be ordered for integrated fronts.



Corbusier Pull Handle in Chrome

Product Code	Length	Depth
PH747	142/128mm	35mm



Corbusier Pull Handle in Chrome

Product Code	Length	Depth
PH748	174/160mm	35mm



Corbusier Pull Handle in Brushed Nickel

Product Code	Length	Depth
PH749	142/128mm	35mm



Corbusier Pull Handle in Brushed Nickel

Product Code	Length	Depth
PH750	174/160mm	35mm



Brushed Nickel Trafalgar Bow Handle

Product Code	Length	Depth
PH751	168/128mm	28mm



Brushed Nickel 12mm T Bar Handle

Product Code	Length	Depth
PH752	188/128mm	35mm



Bow handle, stainless steel effect

Product Code	Length	Depth
PH753	184/128mm	28mm



Bow handle, chrome effect

Product Code	Length	Depth
PH754	184/128mm	28mm



Bow handle, die-cast, stain nickel

Product Code	Length	Depth
PH755	153/128mm	30mm



Bow handle, stainless steel effect

Product Code	Length	Depth
PH756	154/128mm	35mm
PH757	190/160mm	35mm



Bar handle square, stainless steel effect

Product Code	Length	Depth
PH758	136/128mm	30mm



18mm diameter bar handle, stainless steel effect

Product Code	Length	Depth
PH759	148/128mm	40mm
PH760	180/160mm	40mm

NOTE: Dimensions marked **XX/XXmm** indicate **overall length / hole centres**.

14.3 - Modern Handle Collection

NOTE: Dimensions marked **XX/XXmm** indicate **overall length / hole centres**.

Extra handles must be ordered for integrated fronts.



Knob, bright copper

Product Code	Length	Depth
PH761	33mm	30mm



Knob plain, brass, stainless steel effect

Product Code	Length	Depth
PH762	30mm	30mm



Cup handle, copper effect

Product Code	Length	Depth
PH764	64mm	28mm



Cup handle, chrome effect

Product Code	Length	Depth
PH765	64mm	28mm



Bar handle, slimline, bright copper

Product Code	Length	Depth
PH767	168/160mm	30mm



Bow handle with textured centre, stainless steel effect

Product Code	Length	Depth
PH768	203/160mm	30mm



Knob with textured centre, stainless steel effect

Product Code	Length	Depth
PH769	35mm	32mm



D handle, die- cast, stainless steel effect

Product Code	Length	Depth
PH770	131/96mm	28mm



Cup handle, die- cast, stainless steel effect

Product Code	Length	Depth
PH771	64mm	26mm



Square Handle, die- cast brushed steel effect

Product Code	Length	Depth
PH772	32mm	20mm



Bow Handle, stainless steel effect

Product Code	Length	Depth
PH773	175/160mm	28mm



Bow handle, stainless steel effect

Product Code	Length	Depth
PH774	147/128mm	28mm

NOTE: Dimensions marked **XX/XXmm** indicate **overall length / hole centres**.

14.4 - Modern Handle Collection

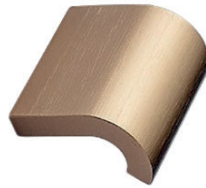
NOTE: Dimensions marked XX/XXmm indicate overall length / hole centres.

Extra handles must be ordered for integrated fronts.



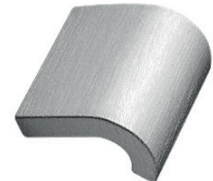
Bridge Handle, chrome effect

Product Code	Length	Depth
PH775	204/160mm	28mm



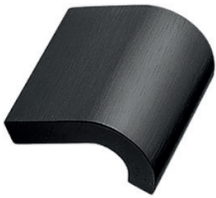
Invert Handle Pull, Brushed Brass

Product Code	Length	Depth
PH1132	40mm	34mm
PH1135	120mm	34mm



Invert Handle Pull, Brushed Steel

Product Code	Length	Depth
PH1133	40mm	34mm
PH1136	120mm	34mm



Invert Handle Pull, Brushed Matt Black

Product Code	Length	Depth
PH1134	40mm	34mm
PH1137	120mm	34mm



Edge Straight Inox Look

Product Code	Length	Depth
PH1001	40mm	18mm
PH1002	200mm	18mm
PH1003	350mm	18mm



Edge straight brushed antique bronze

Product Code	Length	Depth
PH1004	40mm	18mm
PH1005	200mm	18mm
PH1006	350mm	18mm



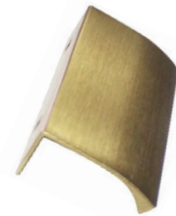
Edge Straight Rose Gold

Product Code	Length	Depth
PH1007	40mm	18mm
PH1008	200mm	18mm
PH1009	350mm	18mm



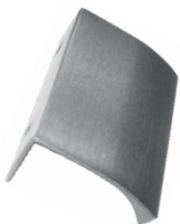
Edge straight brushed anthracite

Product Code	Length	Depth
PH1010	40mm	18mm
PH1011	200mm	18mm
PH1012	350mm	18mm



Edge straight brushed brass effect

Product Code	Length	Depth
PH1128	100mm	18mm



Edge straight brushed aluminium effect

Product Code	Length	Depth
PH1129	100mm	18mm



Edge straight brushed matt black

Product Code	Length	Depth
PH1130	100mm	18mm



Edge straight brushed titanium effect

Product Code	Length	Depth
PH1131	100mm	18mm

NOTE: Dimensions marked XX/XXmm indicate overall length / hole centres.

14.5 - Modern Handle Collection

NOTE: Dimensions marked **XX/XXmm** indicate **overall length / hole centres**.

Extra handles must be ordered for integrated fronts.



Plato brushed brass effect knob

Product Code	Length	Depth
PH1117	42mm	25mm



Plato brushed aluminium effect knob

Product Code	Length	Depth
PH1118	42mm	25mm



Plato brushed matt black effect knob

Product Code	Length	Depth
PH1119	42mm	25mm



Plato brushed brushed titanium effect knob

Product Code	Length	Depth
PH1120	42mm	25mm



Square 10 brushed brass effect handle

Product Code	Length	Depth
PH1121	138/128mm	35mm



Square 10 brushed aluminium effect handle

Product Code	Length	Depth
PH1122	138/128mm	35mm



Square 10 matt black effect handle

Product Code	Length	Depth
PH1123	138/128mm	35mm



Square 10 brushed titanium effect handle

Product Code	Length	Depth
PH1124	138/128mm	35mm



T Pull Handle, Brushed Brass

Product Code	Length	Depth
PH1138	126mm	10mm



T Pull Handle, Inox Brushed Steel

Product Code	Length	Depth
PH1139	126mm	10mm



T Pull Handle, Brushed Matt Black

Product Code	Length	Depth
PH1140	126mm	10mm



T Pull Handle, Brushed Anthracite

Product Code	Length	Depth
PH1141	126mm	10mm

NOTE: Dimensions marked **XX/XXmm** indicate **overall length / hole centres**.

14.6 - Modern Handle Collection

NOTE: Dimensions marked XX/XXmm indicate overall length / Hole centres.

Extra handles must be ordered for integrated fronts.



Modern Double T Pull PPHandle, Brushed Brass

Product Code	LengthPPH	DepthPPH
PH1142	286/160mm	24.5mm



Modern Double T Pull PPHandle, Brushed Steel

Product Code	LengthPPH	DepthPPH
PH1143	286/160mm	24.5mm



Modern Double T Pull PPHandle, Brushed Matt Black

Product Code	LengthPPH	DepthPPH
PH1144	286/160mm	24.5mm



Modern Double T Pull handle, Brushed Anthracite

Product Code	Length	Depth
PH1145	286/160mm	24.5mm



Bow Handle Die Cast Stainless Steel Effect

Product Code	Length	Depth
PH1026	226/192mm	32mm
PH1027	267/224mm	32mm



T-Bar Handle Stainless Steel

Product Code	Length	Depth
PH1037	60mm	33mm



Bar Handle Stainless Steel Effect

Product Code	Length	Depth
PH1038	168/128mm	33mm
PH1039	232/192mm	33mm
PH1040	264/224mm	33mm



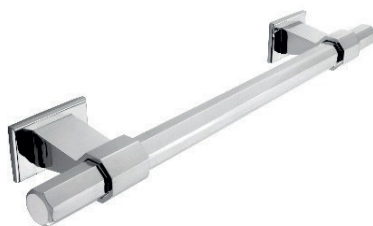
Bar Handle Stainless Steel Effect

Product Code	Length	Depth
PH1043	237/177mm	33mm



Hexagonal T-bar Chrome effect

Product Code	Length	Depth
PH1068	68mm	38mm



Hexagonal Chrome effect

Product Code	Length	Depth
PH1069	225/160mm	38mm



Hexagonal T-bar Black Satin Effect

Product Code	Length	Depth
PH1070	68mm	38mm



Hexagonal Black Satin Effect

Product Code	Length	Depth
PH1071	225/160mm	38mm

NOTE: Dimensions marked XX/XXmm indicate overall length / hole centres.

14.7 - Modern Handle Collection

NOTE: Dimensions marked **XX/XXmm** indicate **overall length / hole centres**.

Extra handles must be ordered for integrated fronts.



T-Bar Bright Nickel 62mm

Product Code	Length	Depth
PH1072	62mm	35mm



Bar Bright Nickel

Product Code	Length	Depth
PH1073	222/160mm	35mm



T-Bar Chrome Effect

Product Code	Length	Depth
PH1074	60mm	45mm



Square Knob with Plate Chrome Effect

Product Code	Length	Depth
PH1076	59mm	38mm



Slimline 'D' Handle Gloss Chrome

Product Code	Length	Depth	P
PH1099	200/192mm	30mm	
PH1100	328/320mm	30mm	



D Handle, bright copper effect

Product Code	Length	Depth
PH1103	192/128mm	35mm



D Handle, stainless steel

Product Code	Length	Depth
PH1106	184/160mm	30mm



D Handle, stainless steel

Product Code	Length	Depth	P
PH1108	145/128mm	36mm	
PH1109	214/192mm	36mm	



D Handle, black satin effect

Product Code	Length	Depth
PH1110	192/160mm	35mm



D Handle, chrome

Product Code	Length	Depth
PH1111	192/160mm	35mm



D handle chrome effect

Product Code	Length	Depth
PH1112	176/160mm	32mm

NOTE: Dimensions marked **XX/XXmm** indicate **overall length / hole centres**.

14.8 - Classic Handle Collection

NOTE: Dimensions marked **XX/XXmm** indicate **overall length / hole centres**.

Extra handles must be ordered for integrated fronts.



Brecon Cup Handle in Iron

Product Code	Length	Depth
PH776	64mm	35mm



Brecon Curved Pull Handle in Iron

Product Code	Length	Depth
PH777	192/128mm	26mm



Brecon Knob only in Iron (no backplate)

Product Code	Length	Depth
PH778	35mm	35mm



Monmouth Cup Handle, Brass

Product Code	Length	Depth
PH1161	48mm	30mm



Monmouth Cup Handle, Chrome

Product Code	Length	Depth
PH1162	48mm	30mm



Monmouth Cup Handle, Matt Black

Product Code	Length	Depth
PH1163	48mm	30mm



Monmouth Cup Handle, Nickel

Product Code	Length	Depth
PH1164	48mm	30mm



Monmouth Knob Handle, Brass

Product Code	Length	Depth
PH1165	32mm	27mm
PH1169	38mm	32mm



Monmouth Knob Handle, Chrome

Product Code	Length	Depth
PH1166	32mm	28mm
PH1170	38mm	32mm



Monmouth Knob Handle, Matt Black

Product Code	Length	Depth
PH1167	32mm	28mm
PH1171	38mm	32mm



Monmouth Knob Handle, Nickel

Product Code	Length	Depth
PH1168	32mm	28mm
PH1172	38mm	32mm



D Handle, die cast antiqued nickel effet

Product Code	Length	Depth
PH782	128/96mm	25mm

NOTE: Dimensions marked **XX/XXmm** indicate **overall length / hole centres**.

14.9 - Classic Handle Collection

NOTE: Dimensions marked **XX/XXmm** indicate **overall length / hole centres**.

Extra handles must be ordered for integrated fronts.



D handle, die-cast, antiqued brass effect

Product Code	Length	Depth
PH784	130/96mm	30mm



D handle, pewter effect

Product Code	Length	Depth
PH785	130/96mm	30mm



Knob T shape, die-cast, antiqued pewter

Product Code	Length	Depth
PH786	70mm	35mm



D handle die-cast, antiqued pewter effect

Product Code	Length	Depth
PH787	144/128mm	35mm



Knob, craft oak

Product Code	Length	Depth
PH788	44mm	30mm
PH789	55mm	30mm



Knob, black satin effect

Product Code	Length	Depth
PH792	33mm	30mm



Knob, die-cast, antique brass effect

Product Code	Length	Depth
PH793	33mm	30mm



Cup Handle, die-cast, satin nickel effect

Product Code	Length	Depth
PH797	64mm	22mm



Elongated Cup Handle, rounded edge, chrome

Product Code	Length	Depth
PH798	160mm	20mm

NOTE: Dimensions marked **XX/XXmm** indicate **overall length / hole centres**.

14.10 - Classic Handle Collection

NOTE: Dimensions marked **XX/XXmm** indicate **overall length / hole centres**.

Extra handles must be ordered for integrated fronts.



Trail Antique Copper

Product Code	Length	Depth
PH1013	48mm	32mm



Trail INOX look

Product Code	Length	Depth
PH1014	48mm	32mm



D Handle Antique Bronze Effect 160mm

Product Code	Length	Depth
PH1083	178/160mm	30mm



D Handle Industrial Matt Black 160mm

Product Code	Length	Depth
PH1084	178/160mm	30mm



Cup Handle Pewter 64mm Centres

Product Code	Length	Depth
PH1095	64mm	24mm



Cup Handle Antique Bronze Effect 64mm Centres

Product Code	Length	Depth
PH1093	64mm	28mm



Cup Handle Industrial Matt Black 64mm Centres

Product Code	Length	Depth
PH1094	64mm	28mm



Knob with Plate Antique Bronze Effect, 32mm Diameter Knob, 20mm Diameter Plate

Product Code	Length	Depth
PH1089	32mm	26mm



Knob with Plate Industrial Matt Black, 32mm Diameter Knob, 20mm Diameter Plate

Product Code	Length	Depth
PH1090	32mm	26mm



Knob die-cast Pewter Effect

Product Code	Length	Depth
PH1091	33mm	28mm



Common Antique Copper Handle

Product Code	Length	Depth
PH1102	170/160mm	30mm

NOTE: Dimensions marked **XX/XXmm** indicate **overall length / hole centres**.

14.11 - Classic Handle Collection

NOTE: Dimensions marked XX/XXmm indicate overall length / hole centres.



Calgary D Handle, American Copper

Product Code	Length	Depth
PH1158	204/160mm	30.1mm



Calgary Pull Handle

Product Code	Length	Depth
PH1159	156.8mm	28.88mm



Calgary Knob, American Copper

Product Code	Length	Depth
PH1160	35mm	29mm



Henley Knob Knurled, Chrome

Product Code	Length	Depth
PH1146	29mm	28.7mm
PH1150	35mm	30.8mm



Henley Knob Knurled, Brass

Product Code	Length	Depth
PH1147	29mm	28.7mm
PH1151	35mm	30.8mm



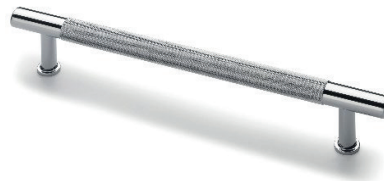
Henley Knob Knurled, Black Chrome

Product Code	Length	Depth
PH1148	29mm	28.7mm
PH1152	35mm	30.8mm



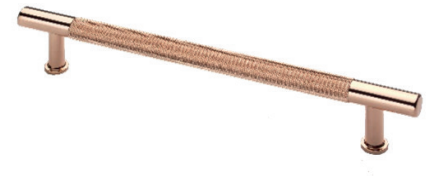
Henley Knob Knurled, Matt Black

Product Code	Length	Depth
PH1149	29mm	28.7mm
PH1153	35mm	30.8mm



Henley Handle Knurled, Chrome

Product Code	Length	Depth
PH1154	200/160mm	34mm



Henley Handle Knurled, Brass

Product Code	Length	Depth
PH1155	200/160mm	34mm



Henley Handle Knurled, Black Chrome

Product Code	Length	Depth
PH1156	200/160mm	34mm



Henley Handle Knurled, Matt Black

Product Code	Length	Depth
PH1157	200/160mm	34mm

NOTE: Dimensions marked XX/XXmm indicate overall length / hole centres.

